



The New Standard For Residual Control Is Now Labeled For Soybeans

Benefits of Zidua® Herbicide

- Longest lasting residual control—up to two weeks longer than other herbicides
- New standard for use flexibility
- Use rates are as much as 10 times less than other brands
- Superior Palmer Amaranth and Waterhemp control

Zidua herbicide provides superior residual control and use flexibility in one product.

Broadleaf Weed Control



Untreated



Zidua + Sharpen®

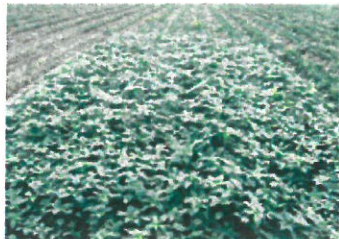


In the photo on the right, Zidua was applied at 2.5 oz/A and Sharpen was applied at 1 fl oz/A. NDSU Field Trial Mayville, ND. Weeds controlled: Common ragweed (glyphosate resistant) and Common lambsquarters.

Technical Information Bulletin

 **BASF**
The Chemical Company

2011 Soybean Plots



Untreated

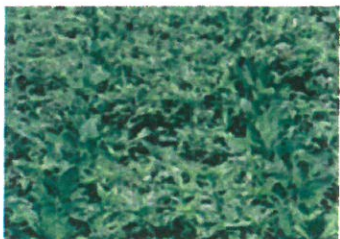


Zidua 2 oz PRE

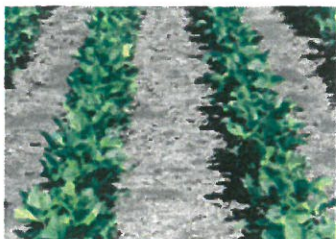


SEREC-Rhower, AR. Dr. Ken Smith-20 DAT.

Glyphosate Resistant Waterhemp Control



Untreated



Zidua + Sharpen



In the photo on the right, Zidua was applied at 2.5 oz/A and Sharpen was applied at 1 fl oz/A. UI Field Trial (SWHZIDUA) Central, IL. Preemergence (41 DAT). Photos taken 06-29-11.



Best Use Recommendations

Use Rate: 1.5–3.5 oz/A

Labeled Crops: Corn, Soybean

Application Timing: Fall, Preplant, Preemergence and Postemergence

- Use rate is dependent on soil texture and application timing. Please consult label for appropriate application rate in your field.

Weeds Controlled or Suppressed:

Grasses and Sedges

- Broadleaf signalgrass
- Bromus spp.
- Crabgrass spp.
- Goosegrass
- Foxtail spp.
- Johnsongrass (seedling)
- Panicum spp.
- Ryegrass spp.
- Shattercane
- Wild proso millet
- Woolly cupgrass
- Yellow Nutsedge

Broadleaf Weeds

- Carpetweed
- Common ragweed
- Kochia
- Lambsquarters
- Marestail (horseweed)
- Morningglory spp.
- Nightshade spp.
- Palmer amaranth
- Pigweed spp.
- Prickly sida
- Velvetleaf
- Waterhemp
- Wild Buckwheat

General Information:

- Zidua® may be applied in water or in sprayable liquid nitrogen fertilizer solutions. Zidua may also be applied impregnated on dry bulk fertilizers.
- A minimum of 1/2" of rainfall or overhead irrigation is required following application and prior to weed emergence for optimal performance.



Always read and follow label directions

Zidua and Sharpen are registered trademarks of BASF.
©2013 BASF Corporation. All Rights Reserved. APN# 1303007 Zidua-Soybeans
For the complete BASF Ag Products Portfolio visit: <http://agproducts.basf.us>

