

Grid Sampling

Maximize the Benefits of Grid Sampling

Grid sampling allows you to prevent over-application of fertilizer in areas where nutrient levels are high and allows you to enrich the soil with fertilizer in areas where nutrient levels are low. The benefits are clear and by accurately placing fertilizer you increase the probability of seeing a response to applied fertilizer. Almost all fields have a tremendous amount of variability in pH, N, P, & K.

Heartland Soil Services LLC.

We use Heartland Soil Services LLC. for pulling our grid samples. Contact us today so we can help implement a plan for your future crops. So you too, can see the potential savings as well as improved yields.

VARIABLE RATE BENEFITS:

- Savings
- Increased Yields
- Placing the right amount of fertilizer where it needs to be.
- Cost effective nutrient management.

Volunteer Wheat Control:

Don't forget to take action on your volunteer wheat and prevent disease such as Wheat Streak Mosaic.

A simple application of Roundup will knock out your volunteer wheat and get your crop back in control.



Wheat Streak Mosaic.

Picture by Erick Dewolf, K-State

Lineup of Fertilizers:

Liquid:

10-34-0 Green
10-34-0 Black
32-0-0
28-0-0
12-0-0-26
9-0-0-10
7-0-0-0-0-15 Chloride
Chelated Zinc 10%

Hydra-Hume
0-0-1

Dry:

46-0-0
12-40-0-6.5 +1 Zinc
11-52-0
0-0-60
90% Sulfur
Zinc Sulfate 35.5%

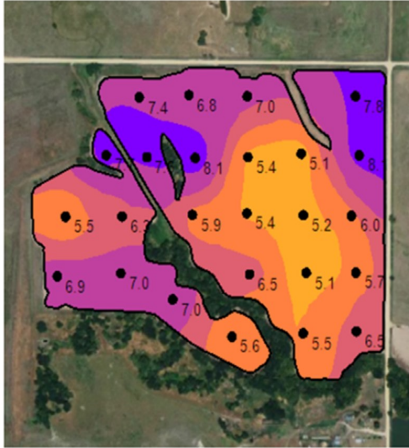
HM 1804

Visit Crop Service Center website "Technical Information Sheets" for more information on these products.

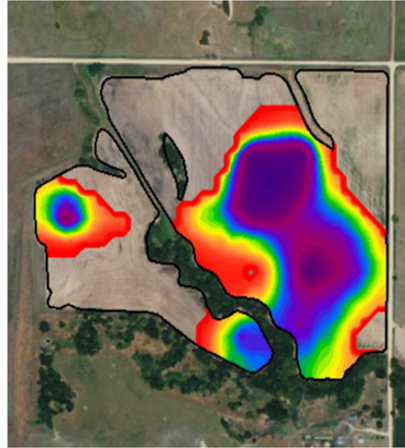
Winter Grass Control

Fall is a good time to control winter grasses such as cheat and downy brome. An application of Powerflex or Olympus after wheat has 2-3 leaves, and before cheat or downy brome has developed much of a root system, is a good time for control. They will also control winter annual broadleaves, henbit, and mustard. Both products work equally well, but Powerflex has less restrictive rotations to other crops in case of

pH Surface (2017)



Ag Lime 70 ECC (2017)



—	Field Boundary
■	pH Surface PH SCALE
■	Excessive Acid 0 - 5 pH (0.0 ac) (0.0%)
■	Acidic 5.1 - 5.5 pH (8.2 ac) (12.9%)
■	Slightly Acidic 5.5 - 6.1 pH (15.8 ac) (25.0%)
■	Grain Optimum 6.1 - 6.6 pH (13.8 ac) (21.7%)
■	Alfalfa Optimum 6.6 - 7.5 pH (19.0 ac) (30.0%)
■	Alkaline > 7.5 pH (6.5 ac) (10.3%)

—	Field Boundary
■	Lime Product Recommendation lb/ac
■	3000 - 3800 (3.6 ac) (5.8%)
■	3900 - 4400 (4.9 ac) (7.7%)
■	4500 - 4800 (5.1 ac) (8.0%)
■	4900 - 5100 (3.4 ac) (5.3%)
■	5200 - 5400 (4.2 ac) (6.6%)
■	5500 - 5700 (3.8 ac) (6.1%)
■	5800 - 6200 (4.8 ac) (7.6%)
■	6300 - 6900 (3.1 ac) (5.0%)

Grid Sampling

Heartland Soil Services LLC.

We use Heartland Soil Services LLC. for pulling our grid samples. Contact us today so we can help implement a plan for your future crops. So you too, can see the potential savings as well as improved yields.

Maximize the Benefits of Grid Sampling

Grid sampling allows you to prevent over-application of fertilizer in areas where nutrient levels are high and allows you to enrich the soil with fertilizer in areas where nutrient levels are low. The benefits are clear and by accurately placing fertilizer you increase the probability of seeing a response to applied fertilizer. Almost all fields have a tremendous amount of variability in pH, N, P, & K.

- Savings
- Increased Yields
- Placing the right amount of fertilizer where it needs to be.
- Cost effective nutrient management.

Fall Burndown Options:

By laying down residuals in the fall you will have better control of weeds when starting out next spring

If going to Milo or Corn —> Atrazine

If going to Soybeans —> Metribuzin

Example that could be a potential burndown for you:

- 36oz Tomahawk
- 8oz LV6
- 8oz Dicamba
- 1oz Sharpen
- 1# Atrazine or 8oz Metribuzin depending on rotation.

*Remember if you use Sharpen you need to use an MSO.

An example of an MSO could be Firezone.



Visit Crop Service Center website “Technical Information Sheets” for more information on these products.

Crop Service Center
201 S. Main
Beverly, KS 67423

Contact Us

Give us a call for more information about our services and products

Crop Service - Beverly

201 S. Main

Beverly, KS 67423

(785) 436-2401

cropserv@twinvalley.net

Visit us on the web at
Cropservicecenter.com

PLACE
STAMP
HERE

CROP SERVICE NEWS

Crop Service Newsletter

Beverly—August 2019

Let us help you with your Fall Needs.

In this article we will be discussing many different topics from Wheat Planting to Fall Burndowns. We look forward to helping you with your upcoming Fall needs.

Website Updated

Our website has recently been updated, so please go take a look! The newsletters we mail out will also be available on the website.

Cropservicecenter.com

Beverly Crop Service Team

Call today to set up an appointment with our sales staff:

Office: 785.436.2401

Doug Rees: 785.488.7030, dougrees8@gmail.com

Jon Ahlquist: 785.488.6770, jahlquist.cropservice@gmail.com

Morgan Nitsch: 785.488.6016, morgan.cropservice@gmail.com

“Crop Service Center cares about your operations success today and in the future. We are also committed to the future generation’s ability to enjoy the same opportunities.”



Crop Service— Beverly Team

In This Issue

- Variable Rate Benefits
- Volunteer Wheat Control
- Fertilizer Lineup
- Winter Grass Control
- Fall Burndown Options
- Helena Products

Lineup of Fertilizers:

Liquid:

10-34-0 Green
10-34-0 Black
32-0-0
28-0-0
12-0-0-26
9-0-0-10
7-0-0-0-0-15 Chloride
Chelated Zinc 10%

Dry:

46-0-0
12-40-0-6.5 +1 Zinc
11-52-0
0-0-60
90% Sulfur
Zinc Sulfate 35.5%

Hydra-Hume
0-0-1

HM 1804

Visit Crop Service Center website "Technical Information Sheets" for more information on these products.

Winter Grass Control

Fall is a good time to control winter grasses such as cheat and downy brome. An application of Powerflex or Olympus after wheat has 2-3 leaves, and before cheat or downy brome has developed much of a root system, is a good time for control. They will also control winter annual broadleaves, henbit, and mustard. Both products work equally well, but Powerflex has less restrictive rotations to other crops in case of



Wheat Streak Mosaic.

Picture by Erick Dewolf, K-State